

# Our Performance

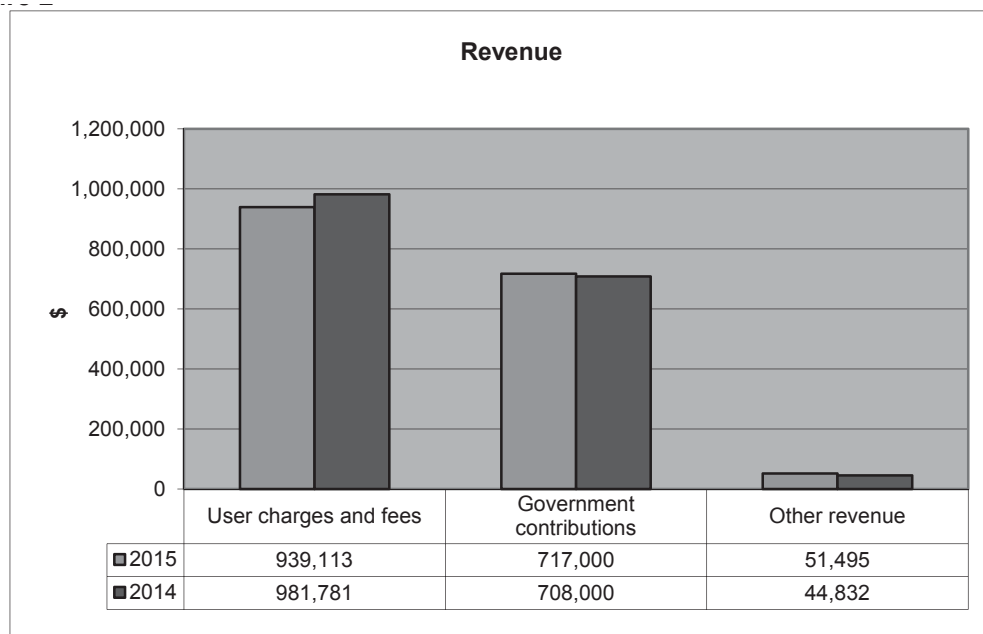
## Financial performance summary

### Statement of Comprehensive Income

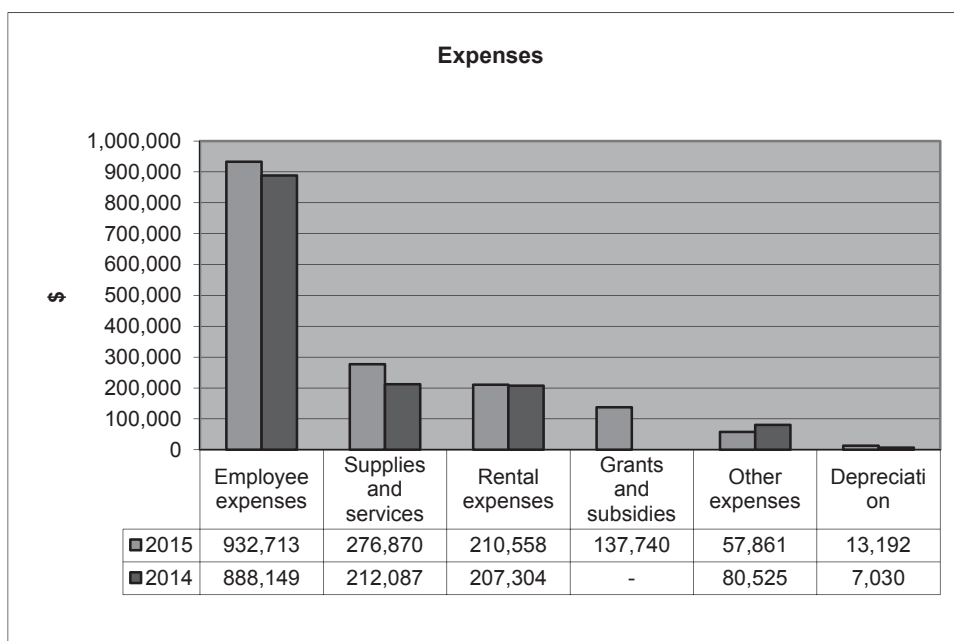
The Statement of Comprehensive Income is used to compare revenue to expenses over the financial year.

Revenues of the Authority are sourced primarily from fees for brothel licences and manager's certificates. The other major source of funds includes a Government grant received through an administered appropriation from the Department of Justice and Attorney-General. The decrease in fees revenue was mainly due to the timing of the lodgement of brothel licence renewal applications and a decrease in brothels fees received during the course of the year.

**Figure 2**



**Figure 3**

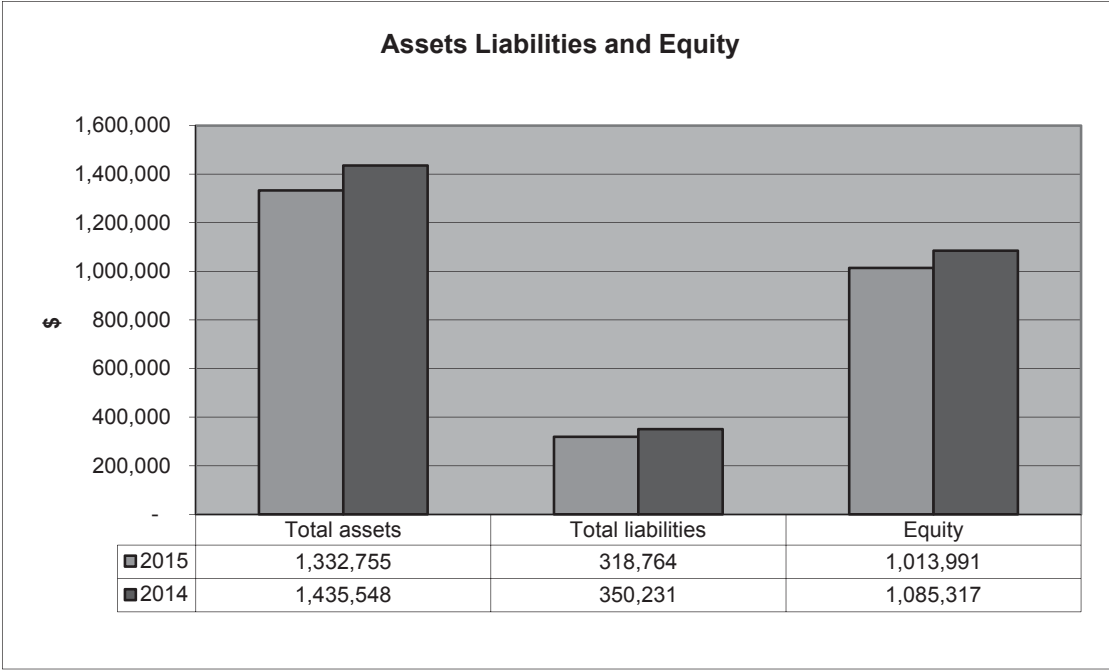


## Statement of Financial Position

The Statement of Financial Position measures the value of assets, liabilities and equity of the Authority as at 30 June 2015.

Our equity has mainly decreased as a result of the decrease in cash assets and a decrease in provisions, other liabilities, and a once off equity contribution to the consolidated fund.

Figure 4



## Statement of Cash Flows

The Statement of Cash Flows measures the inflows and outflows of cash throughout the year, and classifies those transactions into either operating or investing activities.

Cash Flow in the Authority is generated primarily from operating activities, where the significant inflows include revenue from fees for brothel licences and manager’s certificates and revenue from a Government grant. Significant outflows are employee expenses, supplies and services for operational requirements, payments for lease commitments, and the philanthropic contributions. The year ended in a decrease in cash from \$1,332,776 at 30 June 2014 to \$1,232,083 at 30 June 2015.

## Performance statement

The PLA has developed a number of ‘service standards’ in order to provide information about how efficiently and effectively it delivers services within its approved budget. These measures were reported to the community and to the Parliament through the state budget process.

**Table 2: Service standards 2014-15**

Prostitution Licensing Authority	Notes	2014-15 Target/est.	2014-15 Est. actual	2014-15 Actual
<b>Service standards</b>				
<i>Effectiveness measures</i>				
Percentage of licensed brothels implementing best practice standards		100%	100%	100%
Satisfaction of applicants with PLA client service	1	95%	97%	97%
Percentage of complaints resolved	2	95%	97%	100%
<i>Efficiency measure</i>				
Fees income as a percentage of total budget	3	New measure	New measure	New measure

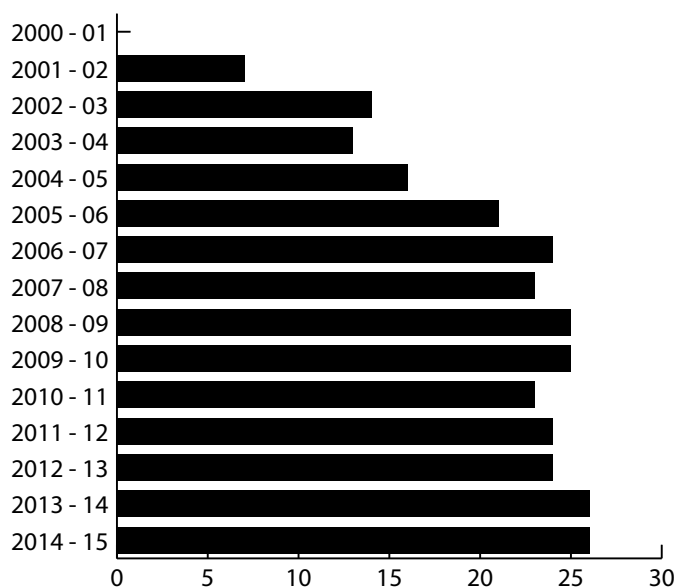
Notes:

1. This standard is a measure of overall satisfaction.
2. This standard refers to the proportion of complaints received in the reporting year that are resolved within the reporting year.
3. This is a new service standard that calculates user fees as a percentage of the PLA total budget. The 2015-16 Target/Est. is 55%.

## Statistical highlights 2014-15

- 26 licensed brothels operating in Queensland at year end (figure 5).
- 40 brothel licence applications (comprising six new applications, 27 annual returns, and 7 renewal applications) and 121 applications for an approved manager's certificate (comprising 47 new applications, 57 annual returns, and 17 renewal applications) (table 5).
- 32 police entries made to 15 licensed brothels (table 10).
- 36 complaints relating to prostitution, down slightly from the previous year (figures 6, 7, and 8).
- There have been no complaints in respect of licensed brothel impact on community amenity in the 15-year history of the PLA.
- 193 compliance activities, resulting in 125 corrective actions (table 9).

**Figure 5: Number of licensed brothels operating in Queensland at year end**



**Figure 6: Number of complaints received by year**

